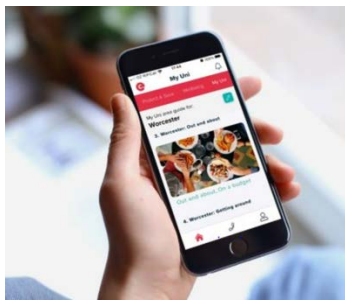


## Register now to confirm your cover

Ahead of arriving, spend a couple of minutes **confirming your cover** by registering with My Endsleigh.

### [CONFIRM YOUR COVER](#)



It's easy to underestimate the value of your possessions, and we're not just talking about your laptop and phone. Items such as your clothes, hairdryers and other smaller gadgets, like Fitbits and watches can all add up.

The great news is that we include insurance for all the students who live with us, by partnering with Endsleigh, the No.1 student insurance provider.

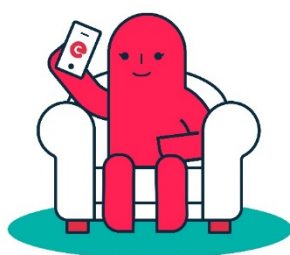
## Student insurance explained

<https://youtu.be/9GAXFgusyM>

## Register and you could win!

As a welcome treat, Endsleigh are giving **away £100 a week for a year to one lucky student** and you will also be automatically entered into the prize draw when you register for My Endsleigh, below:

### [Register now](#)



## What is My Endsleigh?

My Endsleigh is a personalised account area for your insurance policy. Once registered, you can confirm the contents cover arranged by us, then instantly access your cover details and policy documents, as well as contact the claims team at any time.

It's also packed with loads of useful products and information to help you through your first year at Uni, including:

- My Uni - student city guides; Everything you'll need to know about your new Uni town. From top eats to best nightlife, in one place
- Student-friendly insurance products such as gadget, motor, and bicycle
- 24-hour Wellbeing support

### [Register here](#)